

Hi there!

We're glad you're using this resource. Continue to check our website (realsciencechallenge.com) to find more resources. And, sign up for our newsletter to receive updates on materials that will be available soon.

We spend countless hours writing, researching, editing and generating graphics/charts for each question. We want to continue creating useful content for you to use - however, we also want to ensure we are being fairly compensated for it.

Therefore, below are the terms and conditions for use of our materials.

What is allowed:

- photocopying our content for your students to use.
- posting a copy of our content (ie. questions, rubrics) on a password protected site for your students to access and/or complete.
- copying our questions into your tests or assignments. Please give credit in this case.

What is not allowed:

- Selling our content.
- Repackaging our content in your own materials and then selling it. NOTE: giving credit to us still does not make this okay.
- Distributing and/or posting our content online (for example, on social media or a blog).

Thank you for supporting us. And, we look forward to helping you with your teaching practice. Please feel free to reach out to us if you have any questions or suggestions.

Sincerely,

REAL Science Challenge

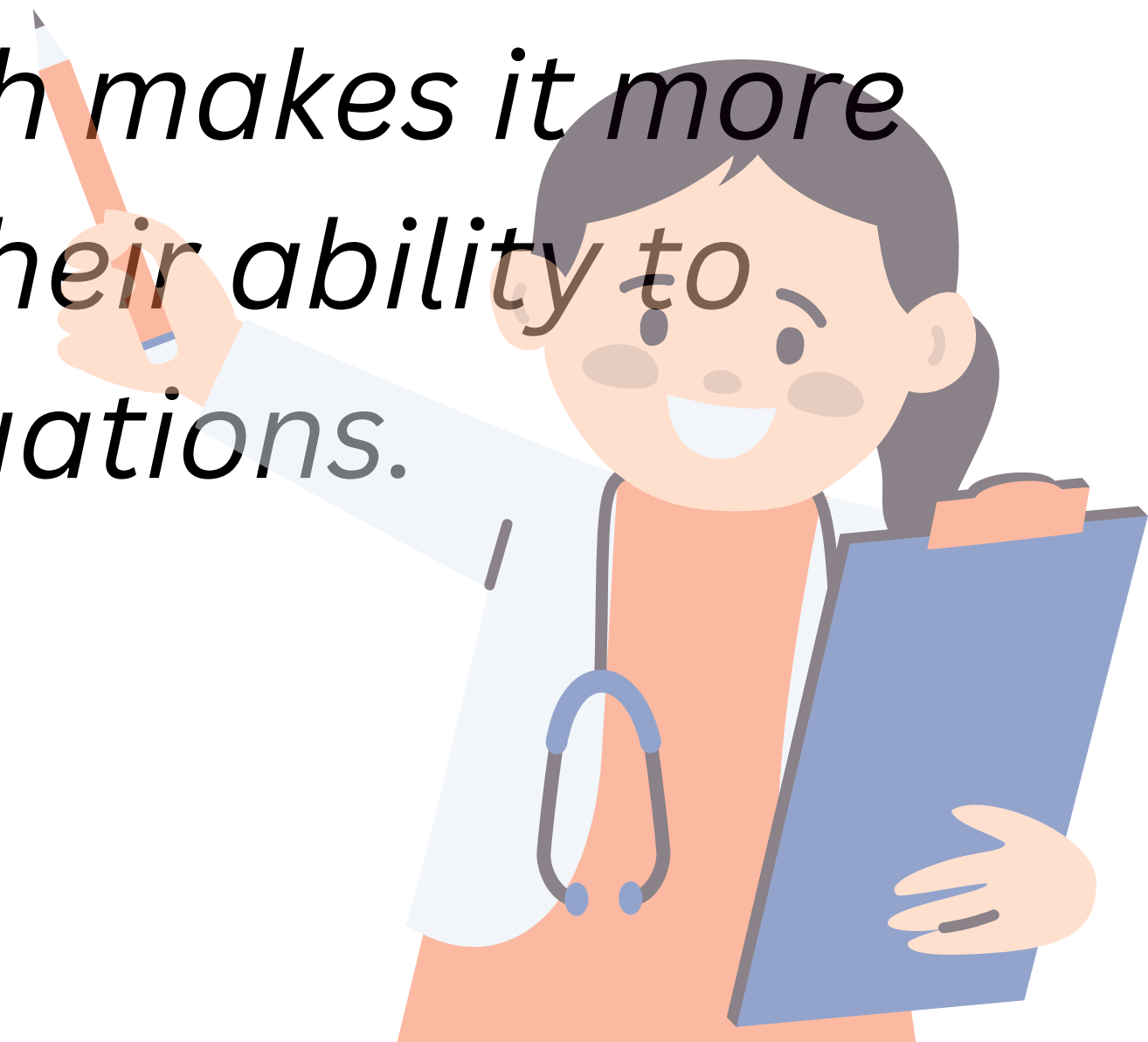
It grades the student on more than just tests and captures their knowledge on the topic on multiple different aspects.

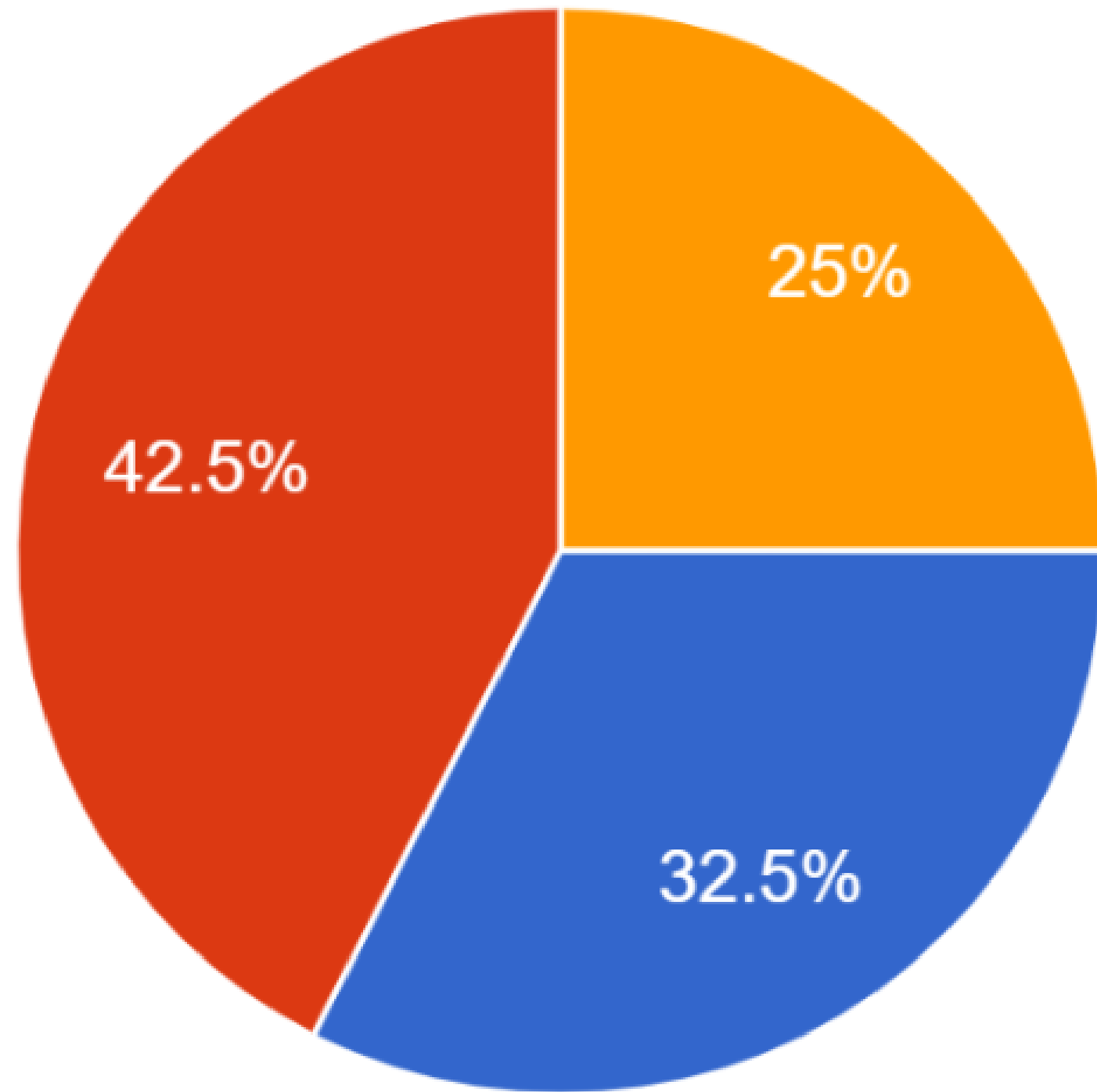


It covers knowledge using a variety of different assessment methods. It is more flexible for students and teachers and allows them to cover a wider area of learning, giving more chances to include learning information outside of the curriculum.



It requires students to dive deeper into specific ideas which requires them to show a more in depth understanding of certain concepts. It also emphasizes the application of knowledge and skills to real world scenarios, which makes it more rigorous as students need to use their ability to use their learning in important situations.





- Less rigorous
- More rigorous
- Equally rigorous

Question: Rigor means "being extremely thorough, exhaustive (ie complete), or accurate." Is the Standards Based Assessment less rigorous, more rigorous, or equally as rigorous to traditional assessment?

